

PART OF THE EAST 1/2 OF N.W. 1/4 OF N.W. 1/4 OF SEC. 33, T.6N., R.2W., S.L.B.&M.

104

VALLEY GREEN ESTATES

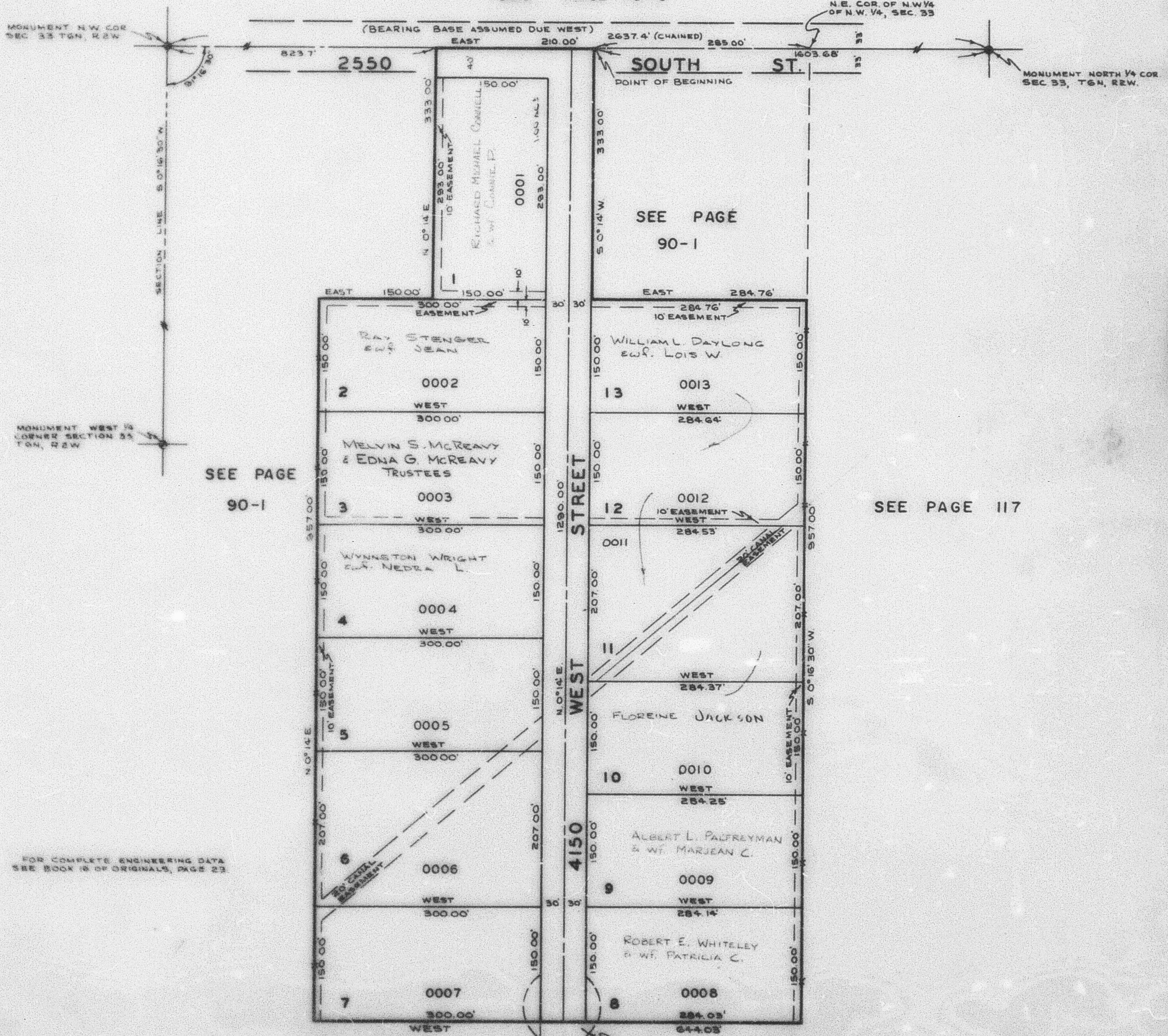
IN WEBER COUNTY

TAXING UNIT: 53

SCALE 1"=100'

PREFIX: 15-104

SEE PAGE 78-3



SEE PAGE 90-1

SEE PAGE 117

FOR COMPLETE ENGINEERING DATA SEE BOOK 18 OF ORIGINALS, PAGE 23

EXCEPT WHERE OTHERWISE SHOWN, ALL LOTS WEST OF THIS LINE ARE OWNED BY DON LEVI ANDERSON & WIFE ROMA E.

EXCEPT WHERE OTHERWISE SHOWN, ALL LOTS EAST OF THIS LINE ARE OWNED BY J. NEWELL JACKSON & WIFE CAROLEE B., ET AL.